

XDB-W-SJS-3S 超高速电脑无梭多针绗缝机

Ultrahigh Speed Computerized Chain Stitch Multi-needle Quilting Machine

用途 / Purpose

绗缝高级床垫、床上用品、居家装饰等产品上的各种花型
It is widely used for quilting high-quality mattresses, quilt covers, and household ornaments. Different patterns are available.



通过CE认证的安全保护标准
CE certificate

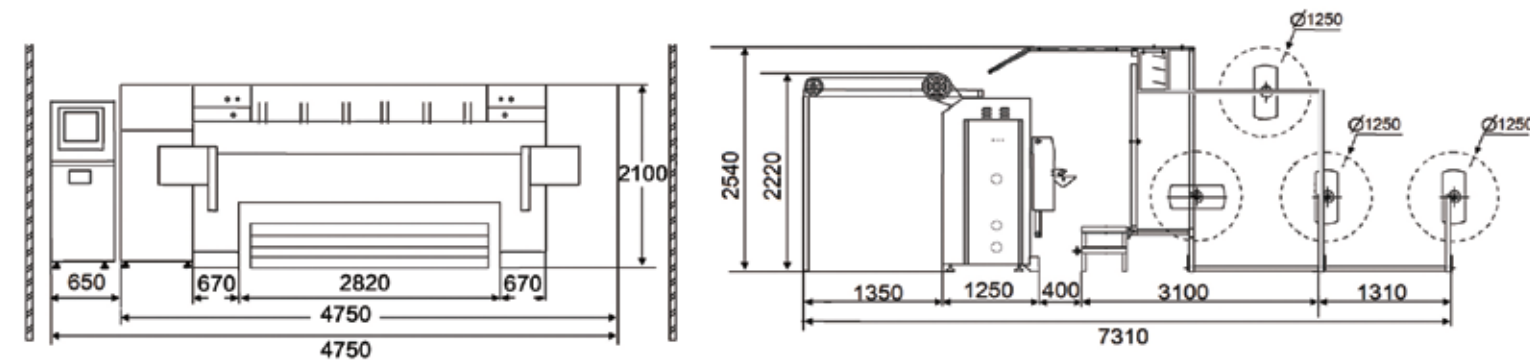
TECHNICAL FEATURES

技术特点

- 三轴采用伺服驱动，独立花效率提升 30%以上
Servo system is used in X-Y-Z axis, that can improve 30%production for independent patterns.
- 托板提高，调钩仔操作更加方便
Raising supporting board makes it more convenient too perate and maintain.
- 配置Y轴减速箱，运转更加顺畅、静音
Y axis reduction gearbox makes it work more fluently with low-noise.
- 新型拨线架结构，噪声小
New type retainer frame structure,with the advantages of low noise.
- 压板一键升降根据材料厚薄调节
Press plate lifting can be adjusted by one-button according to different material thickness
- 绗缝线迹更紧实，绗缝图案"立体"更强烈
More tight thread stitches make the quilting pattern with stronger third dimension
- 针排和压板采用无凸轮的双摆臂运动机构，避免润滑油沾污布料的情况发生
Needle bar and press plate are controlled by a doubles-winging device without cam avoiding lubrication and dirtying of material
- 面、底线断线红外线检查自动停机，自动提针及数字调速
Top thread and bottom thread broken detection,automatic needle-lifting, quilting speed set in software

INSTALLATION DIMENSION

安装尺寸



TECHNICAL PARAMETERS

技术参数

主机尺寸 /Size	L4750xW1500xH2100 mm
绗缝宽度 /Quilting width	2550mm
针排距 /Space between needle rows	50.8,76.2,127 (5")
针排距 /Space between needle rows	76.2,76.2,152.4 (6")
针距 /Space between needles	25.4mm
X行程 /X-axis movement displacement	350mm
绗缝厚度 /Thickness of quilting	≤80mm(所有图案 /for all patterns)

步长 /Stitch length	3~8mm
生产速度 /Speed of operation	60~350 m/h
车针型号 /Model of needle	24/180、23/160、22/140、21/130
主轴转速 /Quilting speed	600~1400 RPM
功率 /Total power required	8.5KW
电压 /Voltage	380V/50HZ、220V/60HZ
全机重量 /Gross weight	5600KG

- 高刚度机身，机器运转速度快、震动轻、噪音低无撞击
Outstanding features such as high rigidity,high running speed,low vibration and noise.
- 新一代电脑控制系统，绗缝精度高，绗缝过程中无需过多的参数调整或修改图案
The new generation of controlling system guarantees quilting accuracy,Parameters or patterns do not require excessive modification during quilting process.
- CAD 绘图方法，图形精确，方便快捷
CAD drawing methods enable precise,convenient, and efficient graphics creation.
- 强大的花模组合及多次跨步功能，可在各种大小的床垫里绗缝出每行各个不相同的图案
Strong functions of pattern-combining and multi-spanquilting to enable you to quilt different patterns in each rowin the mattresses of different sizes.
- 状态监测，机器的运行情况一目了然
Status monitoring provides a clear view of the machine's operational condition.



info@stenburg.co.uk



info@stenburg.ae

