

XDB-W-BSJ 电脑无梭多针绗缝机【分条装置】

Computerized Chain Stitch Multi-needle Quilting Machine(Slitting Device)

用途 / Purpose

绗缝高级床垫、床上用品、居家装饰等产品上的各种花型
It is widely used for quilting high-quality mattresses, quilt covers, and household ornaments. Different patterns are available.



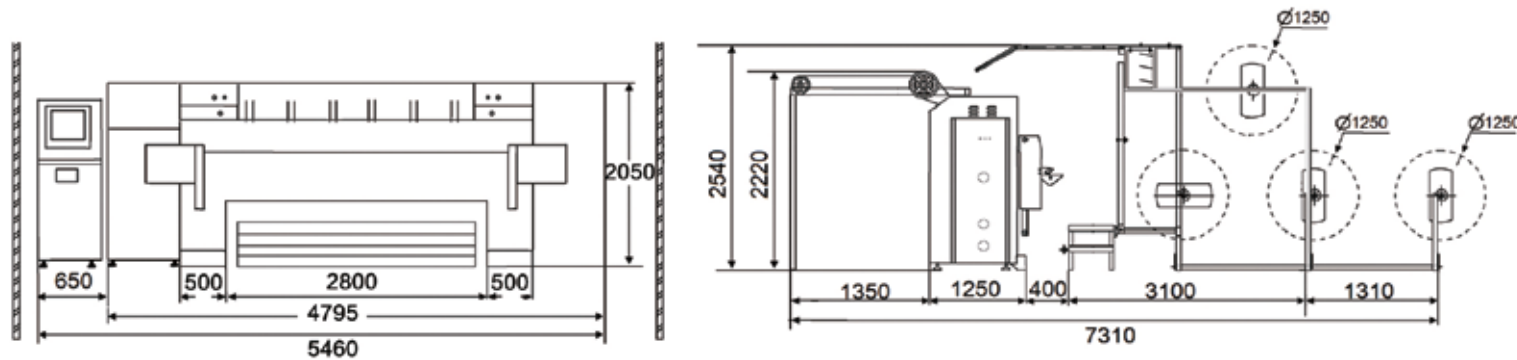
通过CE认证的安全保护标准
CE certificate

在具备 XDB-W-SJ上述所有功能的基础上，增加如下功能
Based on all the functions of XDB-W-SJ, below new functions are added

- 针间距为 0.5 英寸，可做 0.5 英寸的直线和更多规格的花型
Needle space is 0.5 inch, thus it can produce lines with space of 0.5 inch and with more pattern combinations.
- 使用切条装置，能让产品尺寸更精准，更有效地做好围条
With slitting devices, enabling the edge taping materials more accurately and effectively.
- 用户可选择单台 XDB-W-BSJ生产围条，也可选择 XDB-W-BSJ+XDB-W-SJ联机生产围条，联机生产效率更高。
The user can use one quilting machine XDB-W-BSJ to produce edge taping materials,he also can combine XDB-W-BSJ and XDB-W-SJ working together, which has higher production efficiency.

INSTALLATION DIMENSION

安装尺寸



TECHNICAL PARAMETERS

技术参数

主机尺寸 /Size	L4795xW1670xH2050 mm
绗缝宽度 /Quilting width	2450mm
切条宽度 /Slitting width	100~400 mm
针排距 /Space between needle rows	50.8,76.2,127(5") 76.2,76.2,152.4(6")
针距 /Space between needles	12.7mm
X行程 /X-axis movement displacement	410mm
绗缝厚度 /Thickness of quilting	≤80mm(所有图案 /for all patterns)

步长 /Stitch length	3~8mm
生产速度 /Speed of operation	60~300 m/h
车针型号 /Model of needle	24/180、23/160、22/140、21/130
主轴转速 /Quilting speed	600~1200 RPM
功率 /Total power required	7KW
电压 /Voltage	380V/50HZ、220V/60HZ
全机重量 /Gross weight	5250KG

